

QUICK INSTALLATION GUIDE

RADON/CO2/TEMPERATURE/HUMIDITY/PRESSURE (LAN-WMBUS-Q-RC)

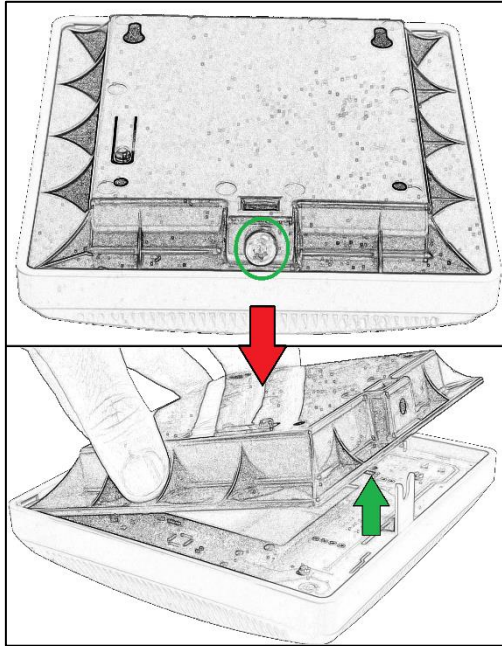
RADON /TEMPERATURE/HUMIDITY/PRESSURE (LAN-WMBUS-Q-R)

CO2/TEMPERATURE/HUMIDITY/PRESSURE (LAN-WMBUS-Q-C)



Recommended mounting instructions:

- Mount on a solid wall
- Place the sensor 160-180cm above floor

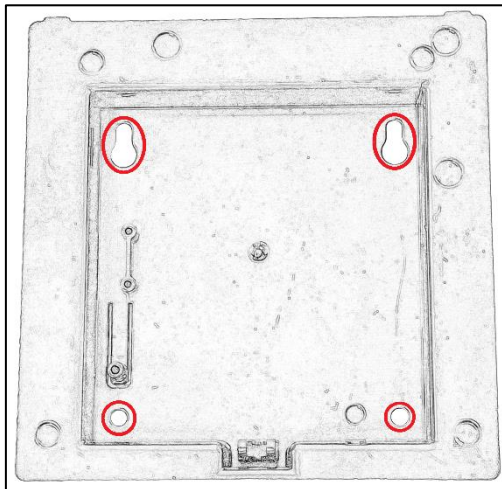


Step 1a:

Unscrew and remove the screw at the bottom of the device.

Step 1b:

Lift the bottom part of the back (black) plastic piece as shown in the image.

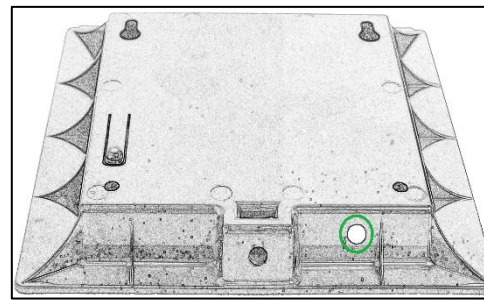


Step 2:

Mark on the wall where the device is going to be mounted by using the holes on the picture.

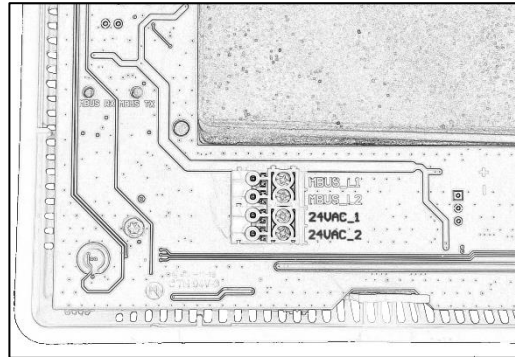
Mount the back (black) piece by using screws.

Note: Make sure it's mounted like the in picture and not any other orientation.



Step 3:

Thread the power cable through the marked hole on the back (black) plastic piece.



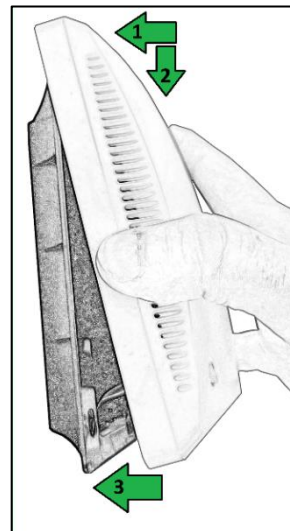
Step 4:

Connect the cables according to table below.

Note: It is recommended that power is OFF during this step.

Note: The device supports both 20-28 VAC and 20-28 VDC.

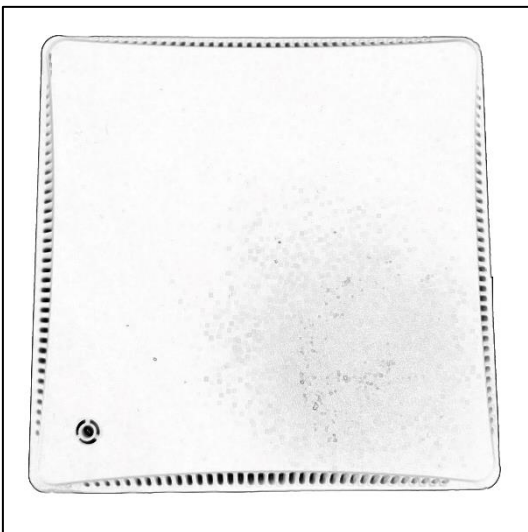
24 VDC	24 VAC
Positive to input 24VAC_1	One cable to input 24VAC_1
Negative to input 24VAC_2	The other cable to input 24VAC_2



Step 5:

Attach the front (white) plastic piece in reverse compared to step 1. Mount the top part of the front first according to arrow number 1 and number 2 and then lower the bottom part.

Mount the screw at the bottom and tighten.



Step 6:

Power on the device.

At startup, the LED on the front will show RED → ORANGE → GREEN → OFF. After turning off, a short beep will be heard.

The installation is now complete!

Indications and behavior

NOTE: Indication (sound and/or light) is only used if device has this enabled.

When there is a state change, e.g., radon level goes from OK to WARNING, the device will indicate this change by blinking and beeping, see flow chart on the right side.

For device LAN-WMBUS-Q-R and LAN-WMBUS-Q-RC, the indications are based on the radon level while LAN-WMBUS-Q-C is based on the CO2 level.

CO2 level for ok: 0-999 ppm

CO2 level for warning: 1000-1999 ppm

CO2 level for alarm: 2000+ ppm

CO2 hysteresis: 200 ppm

Radon level for ok: 0-99 Bq/m³

Radon level for warning: 100-199 Bq/m³

Radon level for alarm: 200+ Bq/m³

Radon level hysteresis: 50 Bq/m³

